

PUBLIC NOTICE

**CHARLESTON DISTRICT, CORPS OF ENGINEERS
69A Hagood Avenue
Charleston, South Carolina 29403-5107**

REGULATORY DIVISION

Refer to: P/N SAC-2017-01961

December 18, 2017

Pursuant to Section 10 of the Rivers and Harbors Act (33 U.S.C. 403) and Sections 401 and 404 of the Clean Water Act (33 U.S.C. 1341), the proposed Great Pee Dee Mitigation Bank Prospectus has been submitted to the Department of the Army (Corps) and the South Carolina Interagency Review Team (IRT) by

**JMT INC.
ATTENTION: MR. GENE EUCHLER
952 HOUSTON NORTHCUTT BOULEVARD, SUITE 100
MT. PLEASANT, SC 29464**

for a proposal to establish and operate a wetland and stream mitigation bank that is adjacent to the

Great Pee Dee River

at a location approximately 2.95 miles southwest of Sellers and approximately 13.19 miles east by northeast of Florence. The property is located approximately 0.30 miles west of the intersection of Marsh Creek Road and Hassie Road, in Dillon and Marion Counties, South Carolina (Latitude: 34.252533°, Longitude: -79.537256°), Oak Grove and Pee Dee U.S. Geological Service Quadrangle sheets.

In order to give all interested parties an opportunity to express their views

NOTICE

is hereby given that written statements regarding the proposed work will be received by the Corps until

30 days from the Date of this Notice,

from those interested in the activity and whose interests may be affected by the proposed work.

The proposed project consists of establishing a freshwater wetland and stream mitigation bank in the Lower Pee Dee River watershed (8-digit Hydrologic Unit Code 03040201) located in the Level III Southeastern Plains Ecoregion. The proposed 1,705.05-acre mitigation site includes approximately 55,503 linear feet of nontidal stream and approximately 1,183.26 acres of freshwater wetlands.

According to the prospectus, the proposal is to enhance 352.94-acres of hardwood forested wetlands that are currently planted in loblolly pine; enhance 152.15-acres of hardwood forested wetlands impaired by ditching and roadways; enhance 152.15-acres of hardwood forested wetlands currently planted in loblolly pine and impaired by ditches; and, preserve 644.52-acres of bottomland hardwood forest. The wetland enhancement will be accomplished through the removal

of planted pine, grading, planting native species, filling and plugging ditches, removal of portions of a road, and the installation of bridges. In addition, the proposal is to restore/enhance 21,823 linear feet of stream by establishing appropriate geomorphic characteristics that will provide long term stability as well as enhanced ecological functions and values. Approximately 24,583 linear feet of stream will be preserved and 9,097 linear feet of the Great Pee Dee River will be buffered. Once the mitigation work is complete, the bank sponsor proposes to monitor the mitigation site to ensure that the restoration areas are performing as expected and meeting the necessary performance standards. The bank sponsor, using a conservation easement, will protect the mitigation bank site.

NOTE: This public notice and associated plans are available on the Corps' website at: <http://www.sac.usace.army.mil/Missions/Regulatory/PublicNotices>.

Also, according to the Prospectus, the proposed mitigation bank will provide in-kind compensatory mitigation for authorized impacts to aquatic resources located within the Lower Coastal Plain ecoregion as shown on the attached Service Area Map. The work required to complete the proposed activities on the mitigation site may be authorized under Nationwide Permit #27 after reviews by the Corps, the South Carolina Department of Health and Environmental Control, and the Interagency Review Team.

The District Engineer has concluded that the discharges associated with this project, both direct and indirect, should be reviewed by the South Carolina Department of Health and Environmental Control in accordance with provisions of Section 401 of the Clean Water Act. As such, this notice constitutes a request, on behalf of the applicant, for certification that this project will comply with applicable effluent limitations and water quality standards (Section 401 of the Clean Water Act). The applicant is hereby advised that supplemental information may be required by the State to facilitate the review.

This notice initiates the Essential Fish Habitat (EFH) consultation requirements of the Magnuson-Stevens Fishery Conservation and Management Act. Implementation of the proposed project will not impact estuarine substrates and emergent wetlands utilized by various life stages of species comprising the shrimp and snapper-grouper management complexes. The District Engineer's initial determination is that the proposed mitigation bank actions would not have a substantial adverse impact on EFH or fisheries managed by the South Atlantic Fishery Management Council and the National Marine Fisheries Service (NMFS). Our final determination relative to project impacts is subject to review by and coordination with the NMFS.

Pursuant to Section 7(c) of the Endangered Species Act of 1973 (as amended), the District Engineer has consulted the most recently available information and has determined that the proposed project will have no effect on any federally endangered, threatened, or proposed species or result in the destruction or adverse modification of designated or proposed critical habitat. This public notice serves as a request to the US Fish and Wildlife Service and NMFS for any additional information they may have on whether any listed or proposed endangered or threatened species or designated or proposed critical habitat may be present in the area that would be affected by the activity.

Pursuant to Section 106 of the National Historic Preservation Act (NHPA), this public notice also constitutes a request to Indian Tribes to notify the District Engineer of any historic properties of religious and cultural significance to them that may be affected by the proposed undertaking.

In accordance with Section 106 of the NHPA, the District Engineer has consulted South Carolina ArchSite (GIS), for the presence or absence of historic properties (as defined in 36 C.F.R.

800.16)(j)(1)), and has initially determined that there are historic properties present, but they will not be affected; therefore, there will be no effect on historic properties. To ensure that other historic properties that the District Engineer is not aware of are not overlooked, this public notice also serves as a request to the State Historic Preservation Office and other interested parties to provide any information they may have with regard to historic properties. This public notice serves as a request for concurrence within 30 days from the SHPO (and/or Tribal Historic Preservation Officer).

The District Engineer's final eligibility and effect determination will be based upon coordination with the SHPO and/or THPO, as appropriate and required and with full consideration given to the proposed undertaking's potential direct and indirect effects on historic properties within the Corps-identified permit area.

Any person may request, in writing, within the comment period specified in this notice, that a public hearing be held to consider this application. Requests for a public hearing shall state, with particularity, the reasons for holding a public hearing.

The decision whether to approve or deny the proposed mitigation bank will be based on an evaluation of the probable impact including cumulative impacts of the activity. All factors that may be relevant to the project will be considered, including the cumulative effects thereof; among those are conservation, economics, aesthetics, general environmental concerns, wetlands, historic properties, fish and wildlife values, flood hazards, flood plain values, land use, navigation, shoreline erosion and accretion, recreation, water supply and conservation, water quality, energy needs, safety, food and fiber production and, in general, the needs and welfare of the people.

The Corps of Engineers is soliciting comments from the public; Federal, state, and local agencies and officials; Indian Tribes; and other interested parties in order to consider and evaluate the impacts of this activity. Any comments received will be considered by the Corps of Engineers to determine whether to approve or deny the proposed mitigation bank. To make this decision, comments are used to assess impacts on endangered species, historic properties, water quality, general environmental effects, and the other public interest factors listed above. Comments are used in the preparation of an Environmental Assessment and/or an Environmental Impact Statement pursuant to the National Environmental Policy Act. Comments are also used to determine the need for a public hearing and to determine the overall public interest of the activity.

**US Army Corps of Engineers
Attention: Regulatory Division
69A Hagood Avenue
Charleston, South Carolina 29403**

The Prospectus for the proposed mitigation bank is available for review by appointment between the hours of 9:00 am and 4:00 pm Monday through Friday at the address listed above. If there are any questions concerning the proposed mitigation bank or the information included in this public notice please contact David B. Wilson by e-mail at david.b.wilson@usace.army.mil or by telephone at 843-329-8044.

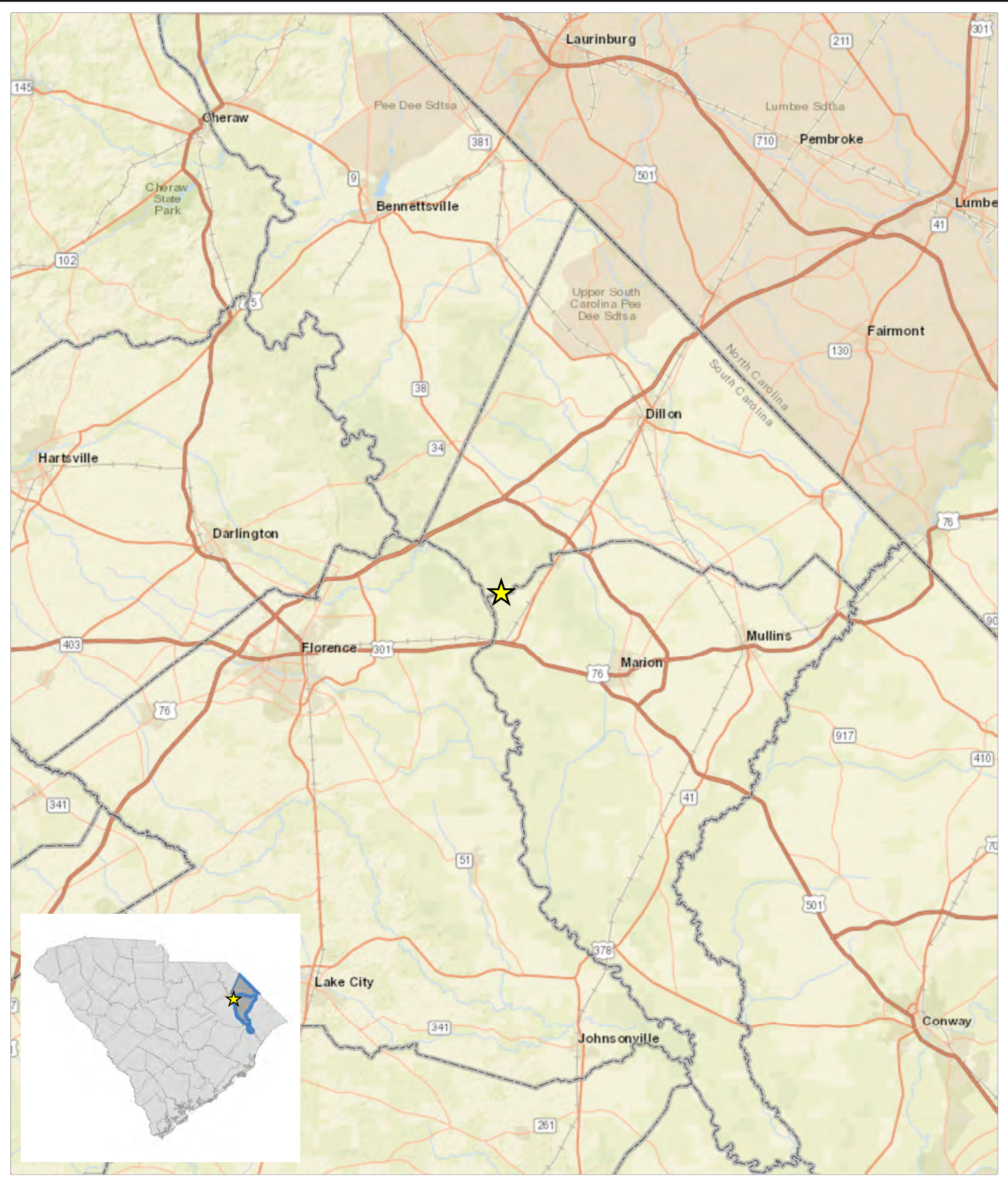
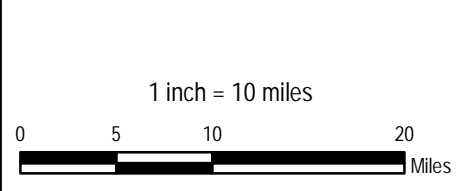


Figure 1: Vicinity Map
 Great Pee Dee Mitigation Bank
 Mitigation Prospectus
 Dillon and Marion Counties, South Carolina
 Source: ESRI
 Date: September 2017



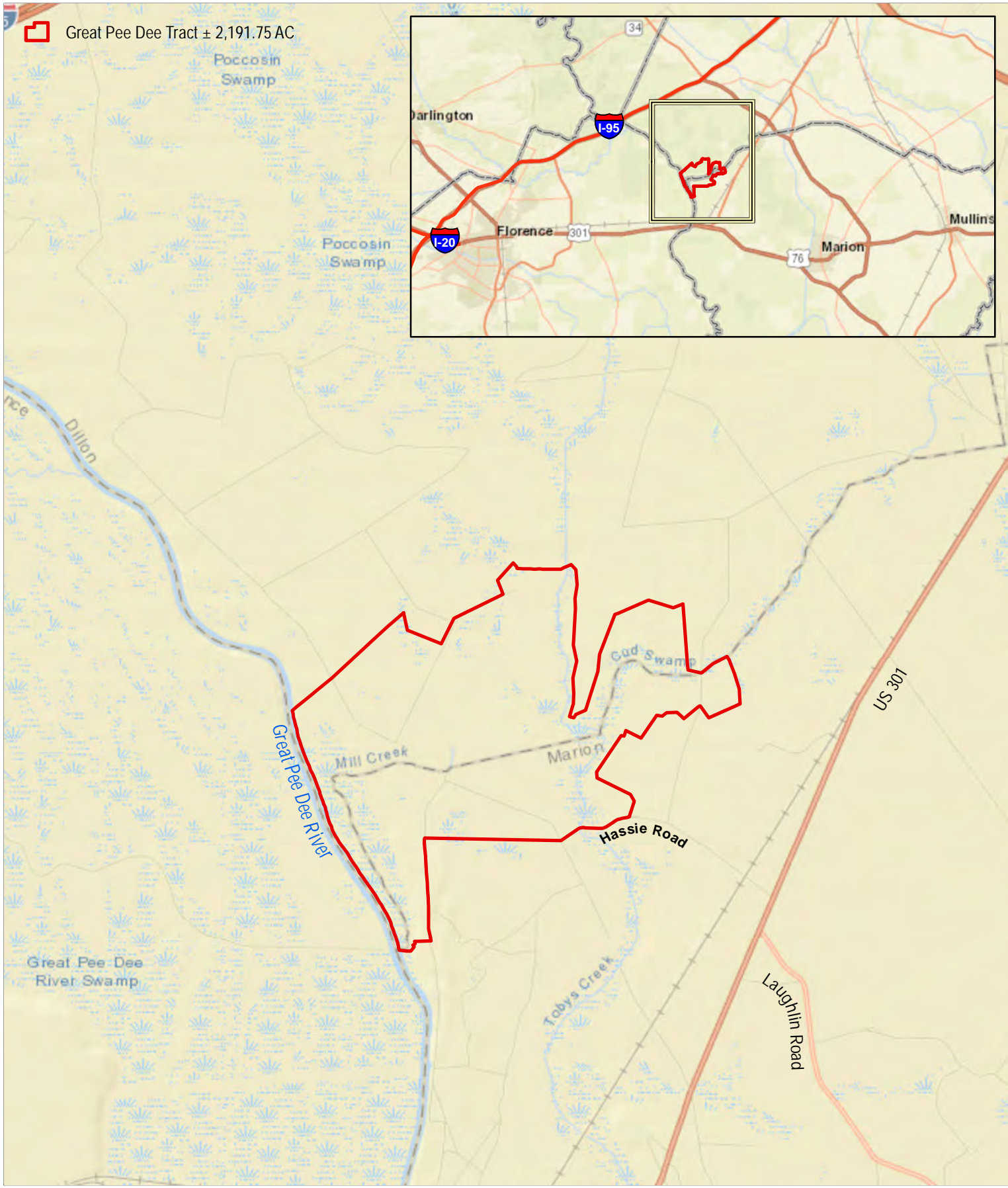
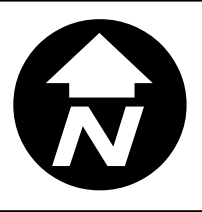
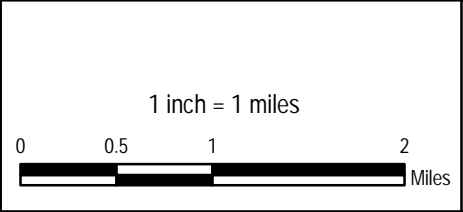
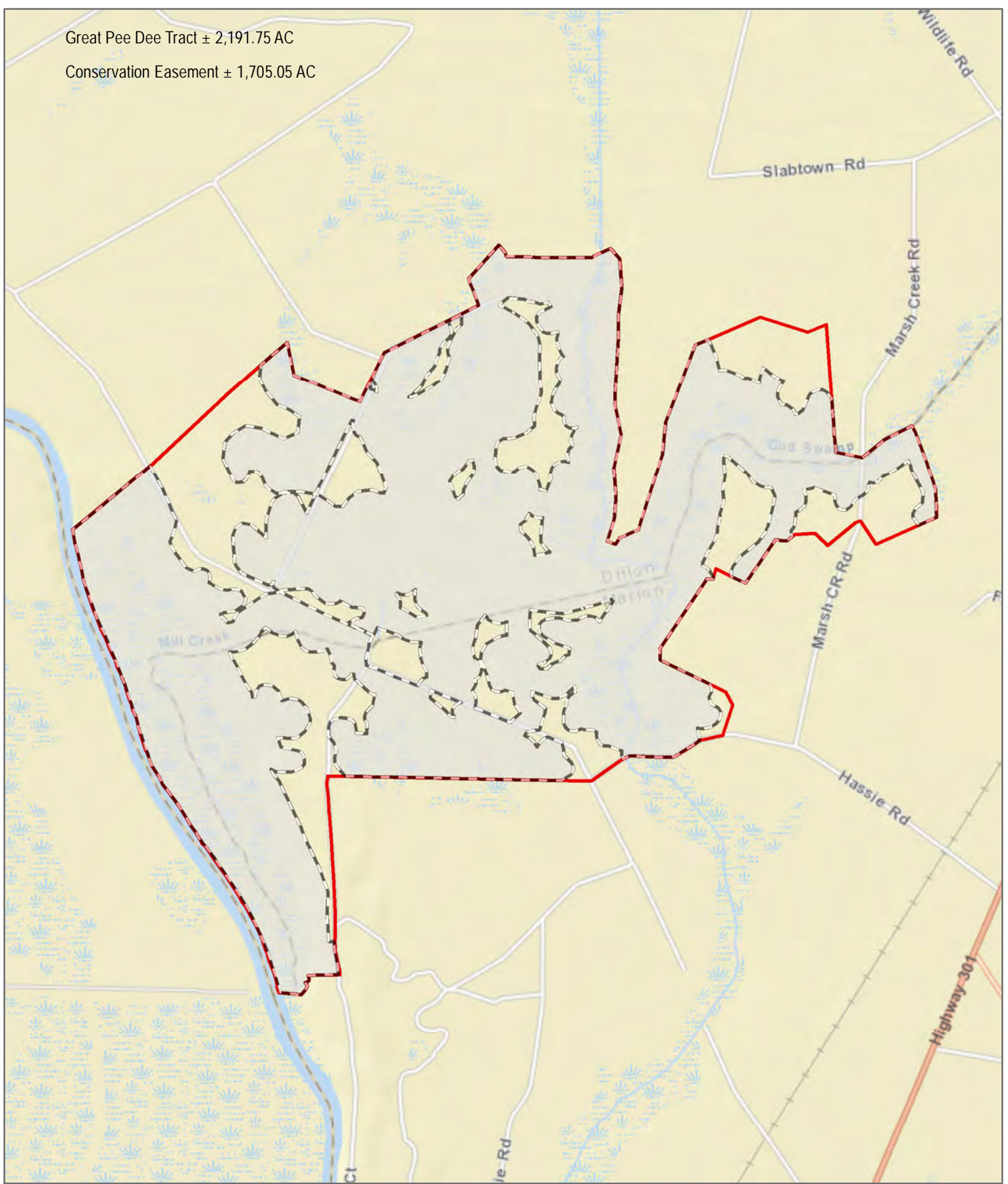


Figure 2: Location Map
 Great Pee Dee Mitigation Bank
 Mitigation Prospectus
 Dillon and Marion Counties, South Carolina
 Source: ESRI
 Date: September 2017



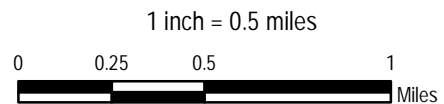
Great Pee Dee Tract ± 2,191.75 AC
Conservation Easement ± 1,705.05 AC



952 Houston Northcutt Blvd., Suite 100
Mount Pleasant, SC 29464
Ph: (843) 556-2624 Fx: (843) 556-4329
www.JMT.com

Figure 3: Mitigation Bank Boundary Map

Great Pee Dee Mitigation Bank
Mitigation Prospectus
Dillon and Marion Counties, South Carolina
Source: ESRI
Date: September 2017



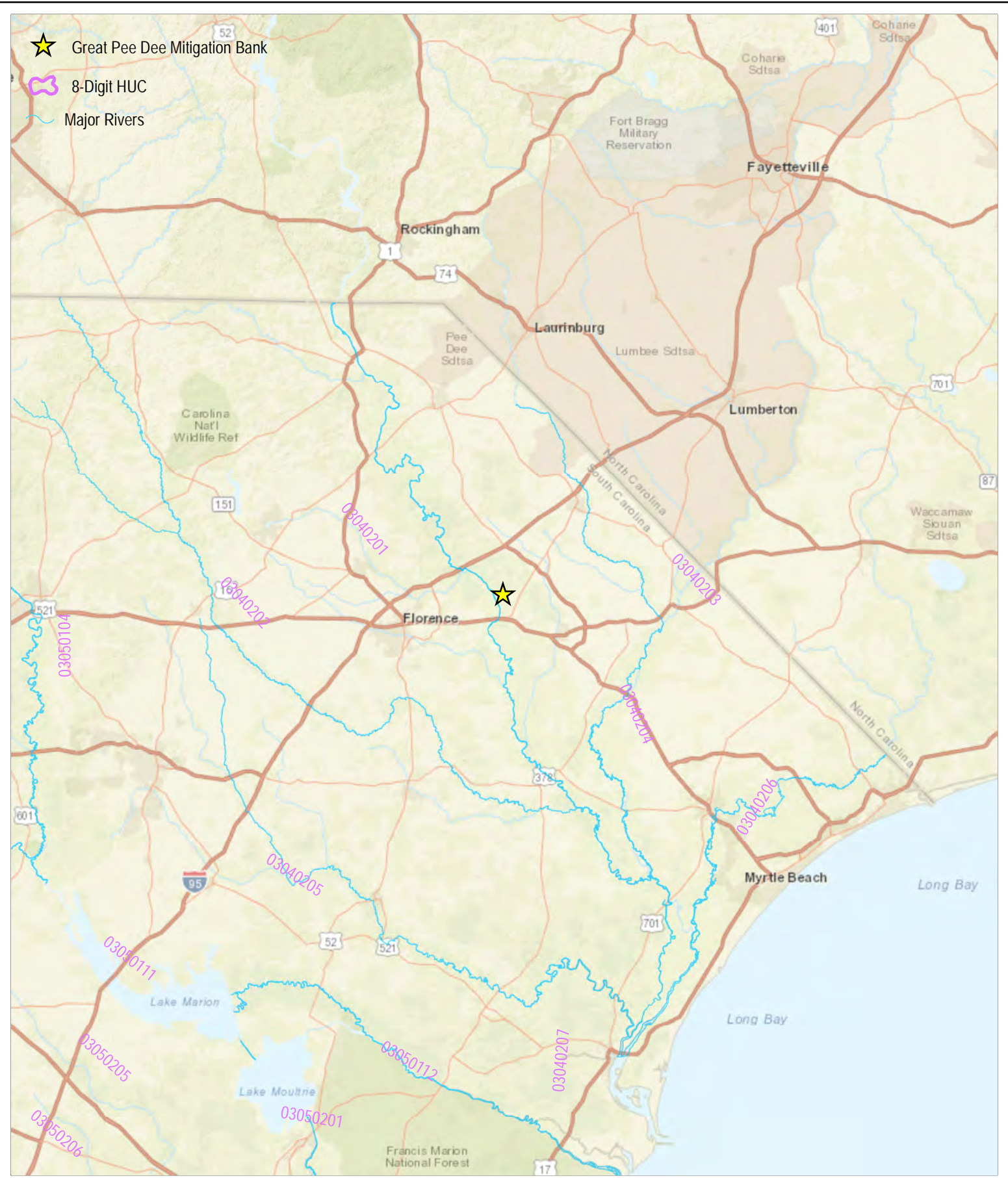
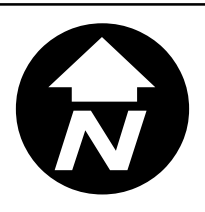
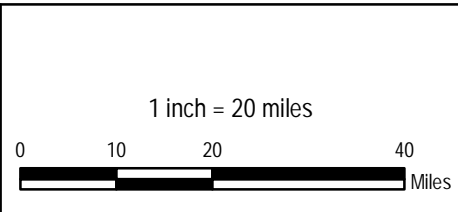


Figure 4: 8-Digit Hydrologic Unit Code Map
 Great Pee Dee Mitigation Bank
 Mitigation Prospectus
 Dillon and Marion Counties, South Carolina
 Source: ESRI, USGS
 Date: September 2017

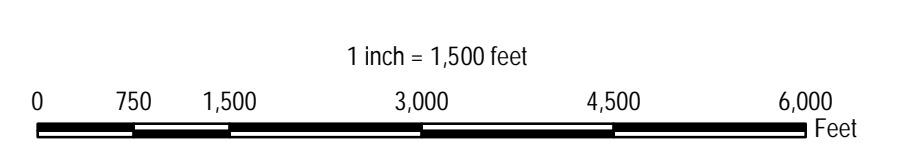






952 Houston Northcutt Blvd. Suite 100
 Mt. Pleasant, SC 29464
 Phone: (843) 556-2624 Fax: (843) 556-4329
 www.JMT.com

Figure 6: Mitigation Unit Map
 Great Pee Dee Mitigation Bank
 Mitigation Prospectus
 Dillon and Marion Counties, South Carolina
 Source: ESRI World Imagery
 Date: September 2017



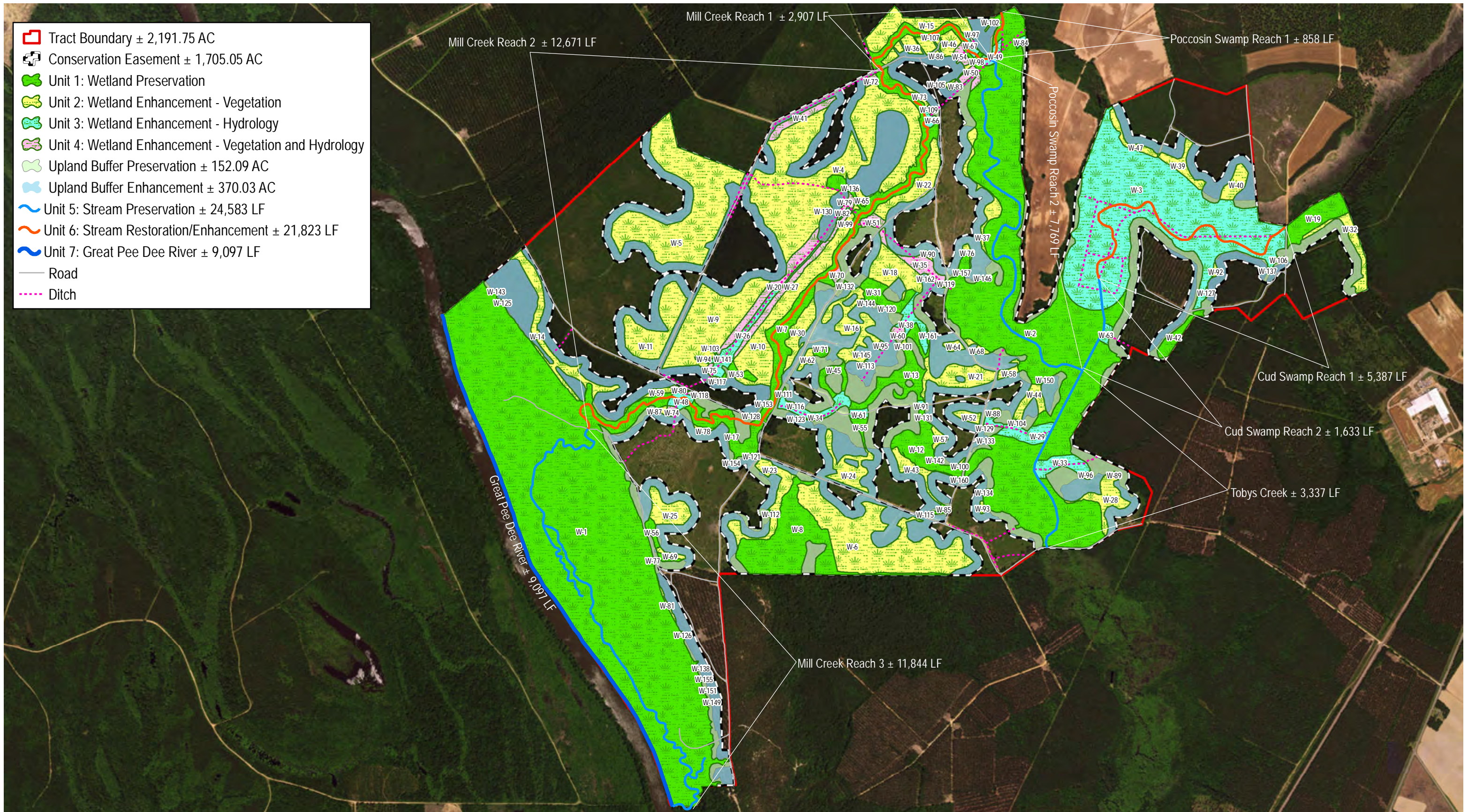
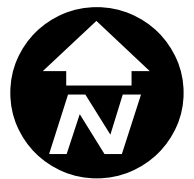
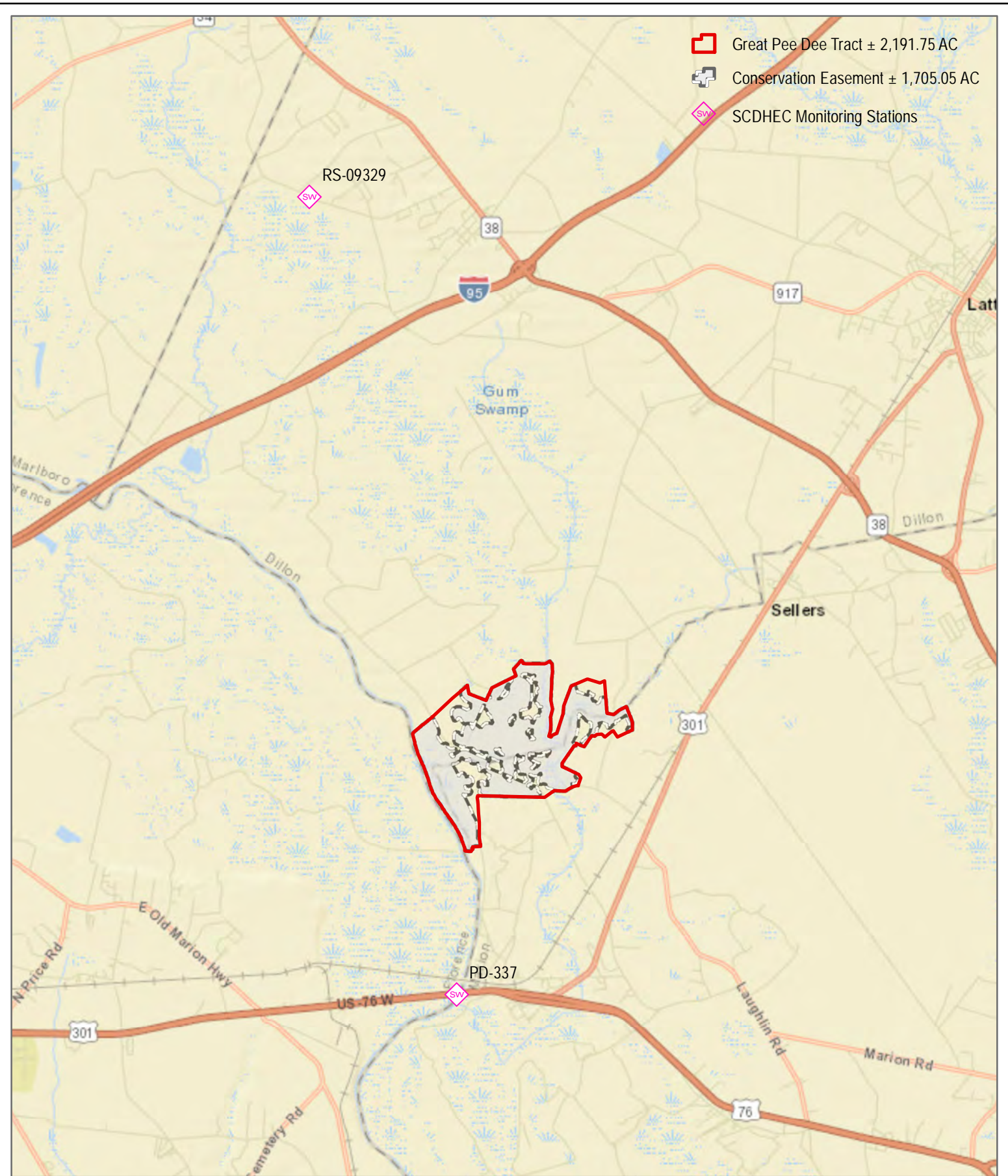


Figure 7: Itemized Resource Unit Map
 Great Pee Dee Mitigation Bank
 Mitigation Prospectus
 Dillon and Marion Counties, South Carolina
 Source: ESRI World Imagery
 Date: September 2017

-  Great Pee Dee Tract ± 2,191.75 AC
-  Conservation Easement ± 1,705.05 AC
-  Stream
-  Flow Direction








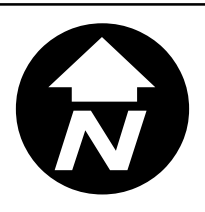
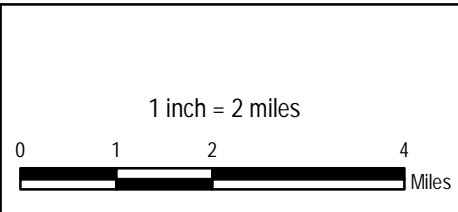
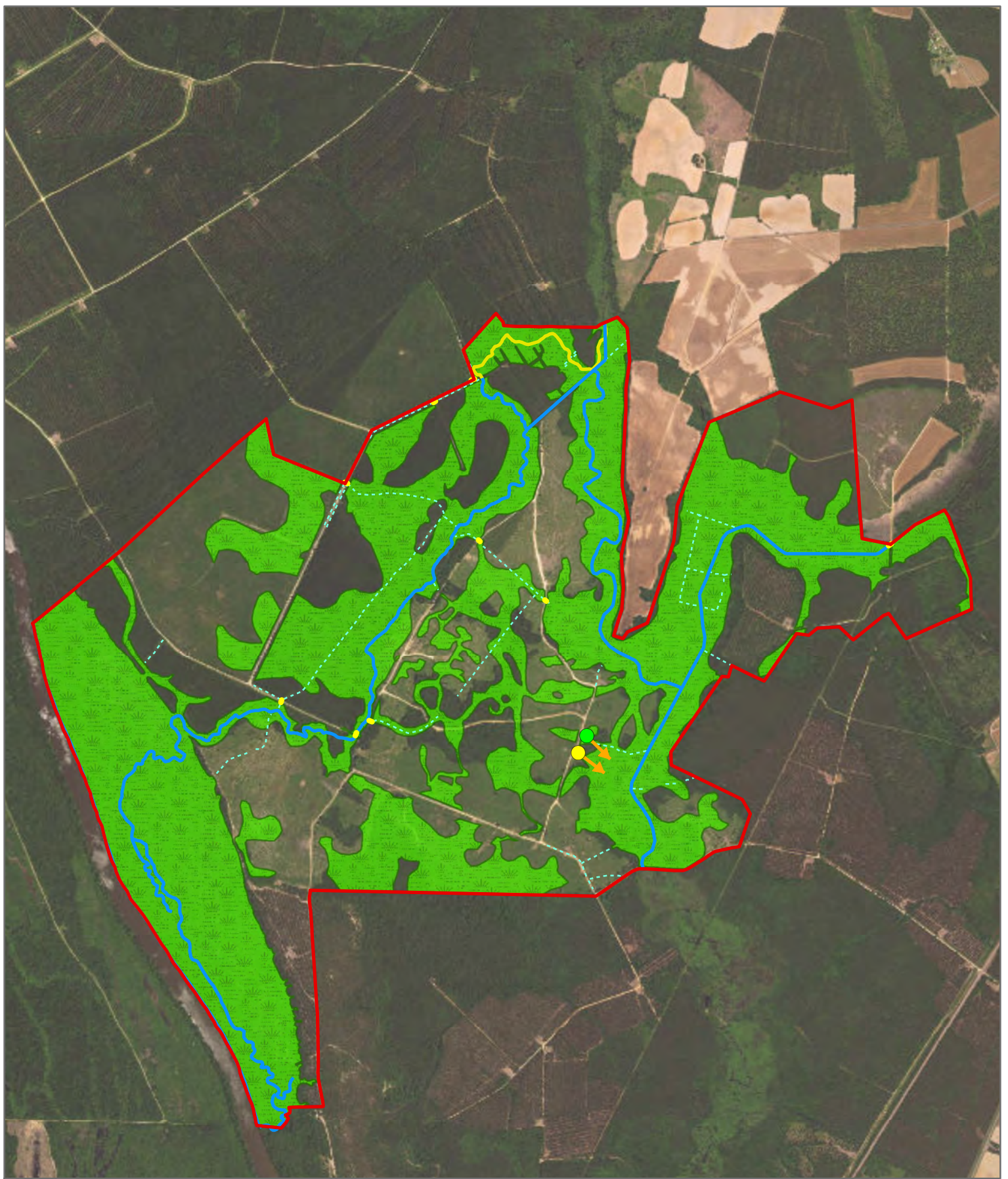
-  Great Pee Dee Tract ± 2,191.75 AC
-  Conservation Easement ± 1,705.05 AC
-  SCDHEC Monitoring Stations

Figure 9: SCDHEC Water Quality Monitoring Stations Map
 Great Pee Dee Mitigation Bank Mitigation Prospectus
 Dillon and Marion Counties, South Carolina
 Source: ESRI, SCDHEC
 Date: September 2017





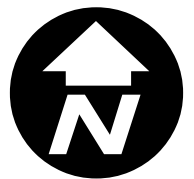
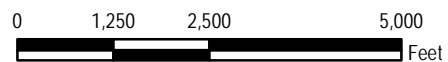
952 Houston Northcutt Blvd., Suite 100
 Mount Pleasant, SC 29464
 Ph: (843) 556-2624 Fx: (843) 556-4329
 www.JMT.com

Figure 10: Waters of the United States Map

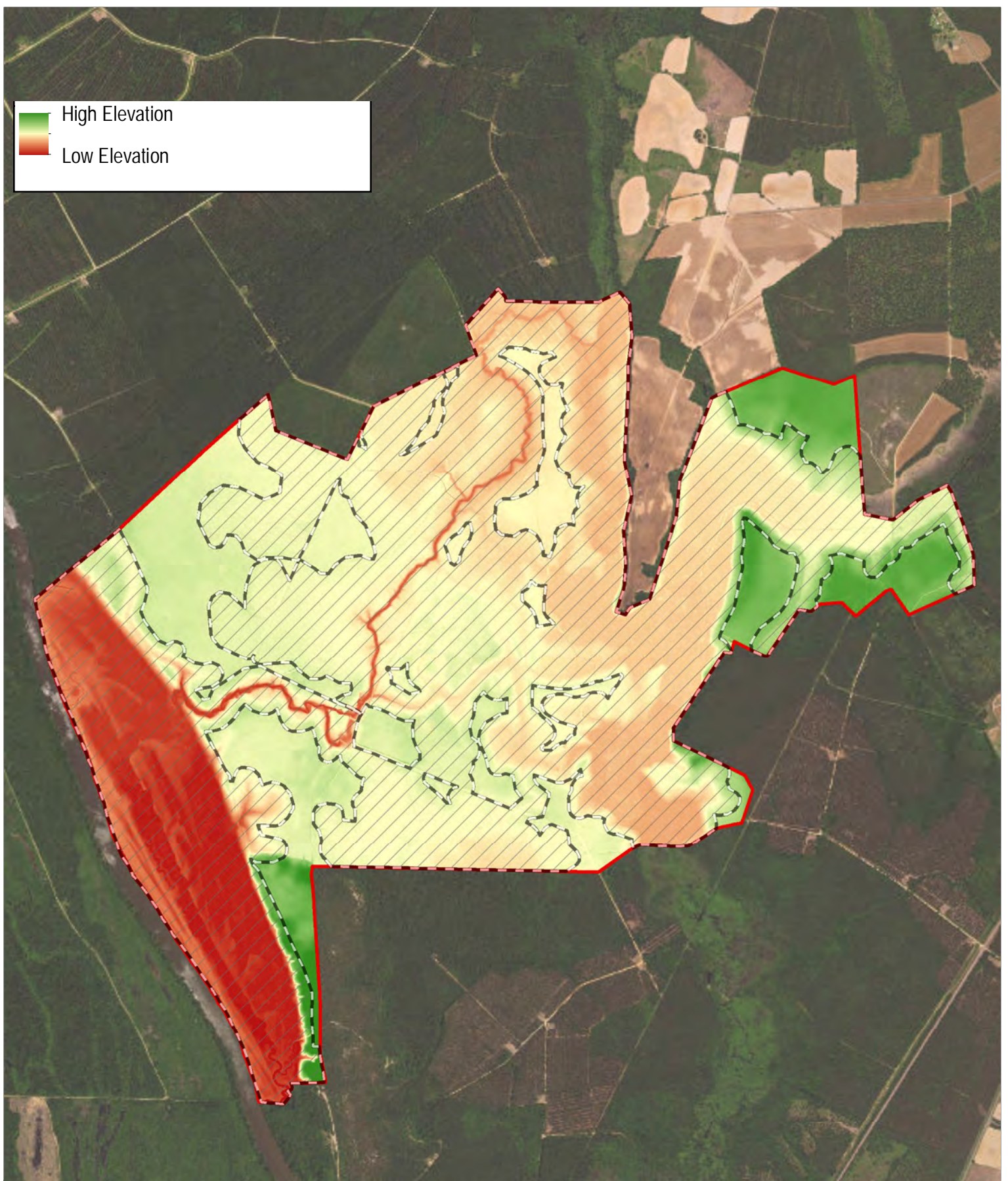
Great Pee Dee Mitigation Bank
 Mitigation Prospectus
 Dillon and Marion Counties, South Carolina
 Source: ESRI

Date: September 2017

1 inch = 2,500 feet

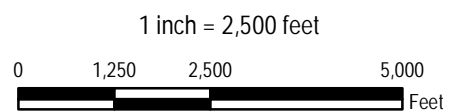


High Elevation
Low Elevation



952 Houston Northcutt Blvd., Suite 100
Mount Pleasant, SC 29464
Ph: (843) 556-2624 Fx: (843) 556-4329
www.JMT.com

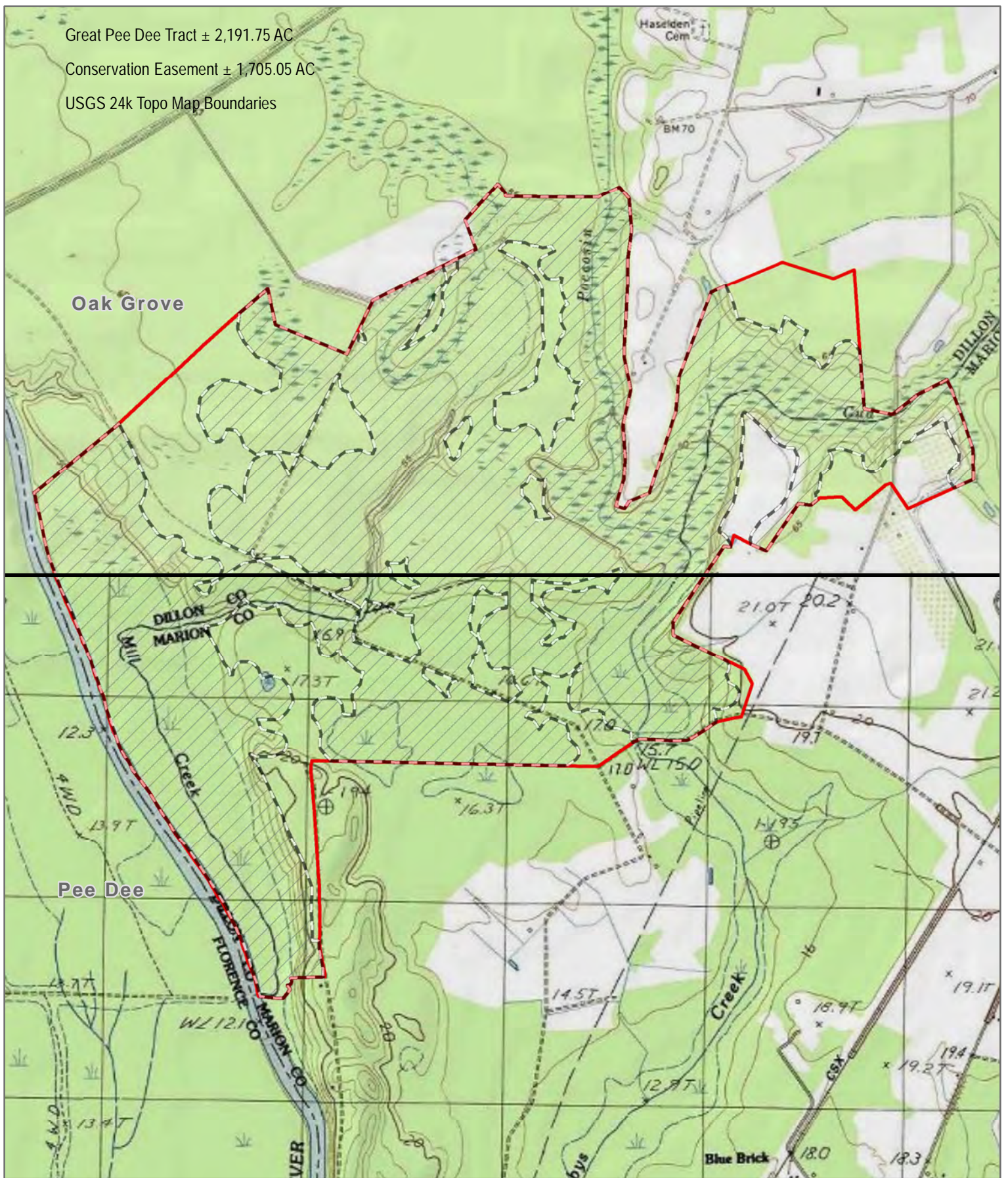
Figure 11: LIDAR Digital Elevation Map
Great Pee Dee Mitigation Bank
Mitigation Prospectus
Dillon and Marion Counties, South Carolina
Source: ESRI, South Carolina LIDAR Consortium
Date: September 2017



Great Pee Dee Tract ± 2,191.75 AC

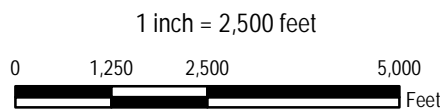
Conservation Easement ± 1,705.05 AC

USGS 24k Topo Map Boundaries



952 Houston Northcutt Blvd., Suite 100
Mount Pleasant, SC 29464
Ph: (843) 556-2624 Fx: (843) 556-4329
www.JMT.com

Figure 12: USGS Topographic Map
Great Pee Dee Mitigation Bank
Mitigation Prospectus
Dillon and Marion Counties, South Carolina
Source: USGS "Oak Grove" & "Pee Dee" 7.5-min Quads
Date: September 2017



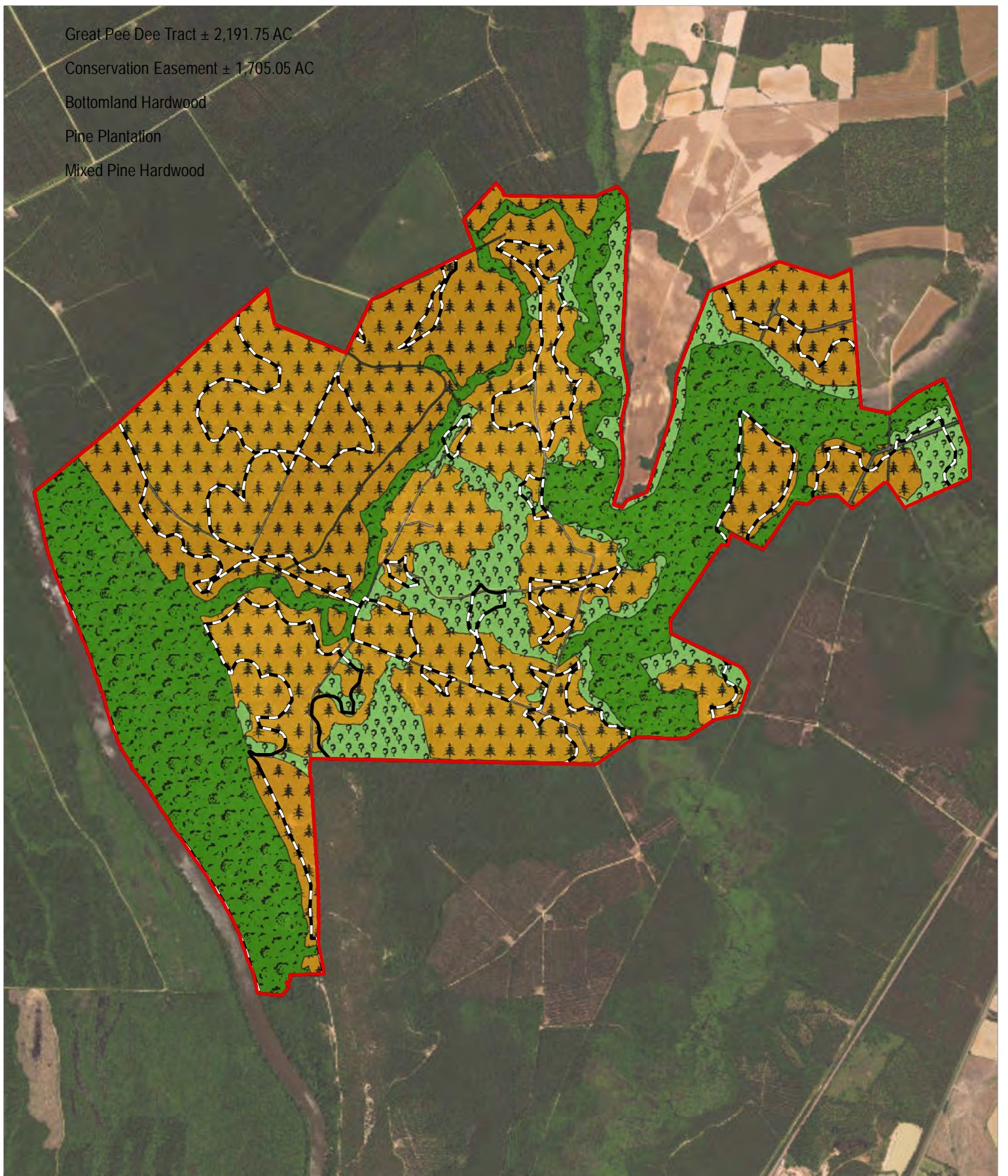
Great Pee Dee Tract ± 2,191.75 AC

Conservation Easement ± 1,705.05 AC

Bottomland Hardwood

Pine Plantation

Mixed Pine Hardwood



952 Houston Northcutt Blvd., Suite 100
Mount Pleasant, SC 29464
Ph: (843) 556-2624 Fx: (843) 556-4329
www.JMT.com

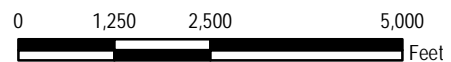
Figure 13: Land Use / Land Cover Map

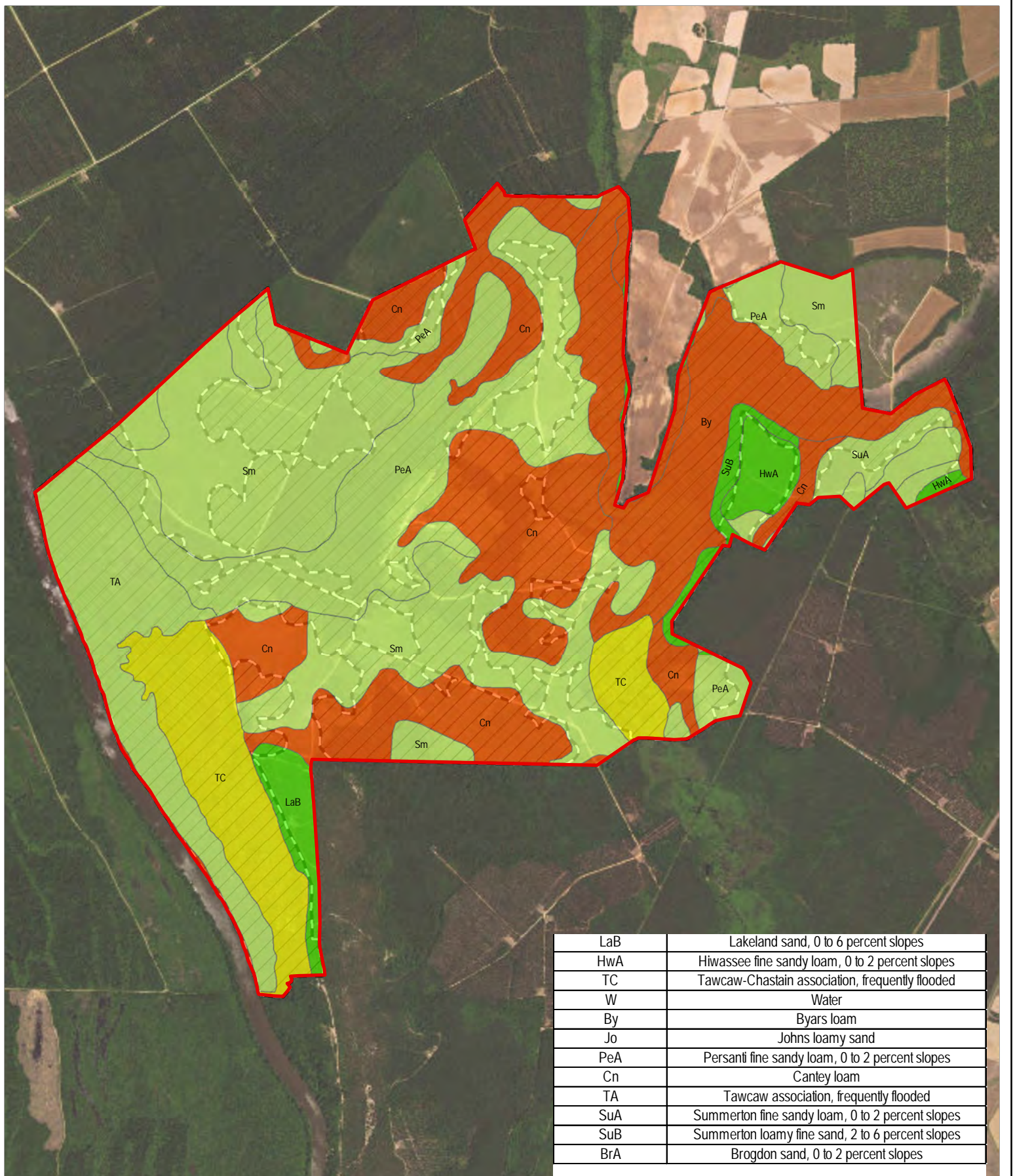
Great Pee Dee Mitigation Bank
Mitigation Prospectus

Dillon and Marion Counties, South Carolina
Source: ESRI, RMS Stand Data

Date: September 2017

1 inch = 2,500 feet

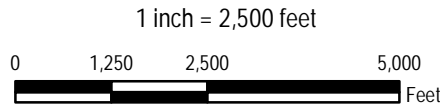




LaB	Lakeland sand, 0 to 6 percent slopes
HwA	Hiwassee fine sandy loam, 0 to 2 percent slopes
TC	Tawcaw-Chastain association, frequently flooded
W	Water
By	Byars loam
Jo	Johns loamy sand
PeA	Persantii fine sandy loam, 0 to 2 percent slopes
Cn	Cantey loam
TA	Tawcaw association, frequently flooded
SuA	Summertown fine sandy loam, 0 to 2 percent slopes
SuB	Summertown loamy fine sand, 2 to 6 percent slopes
BrA	Brogdon sand, 0 to 2 percent slopes

Figure 13: NRCS Hydric Soil Rating Map

Great Pee Dee Mitigation Bank
 Mitigation Prospectus
 Dillon and Marion Counties, South Carolina
 Source: ESRI, NRCS/SCS
 Date: September 2017



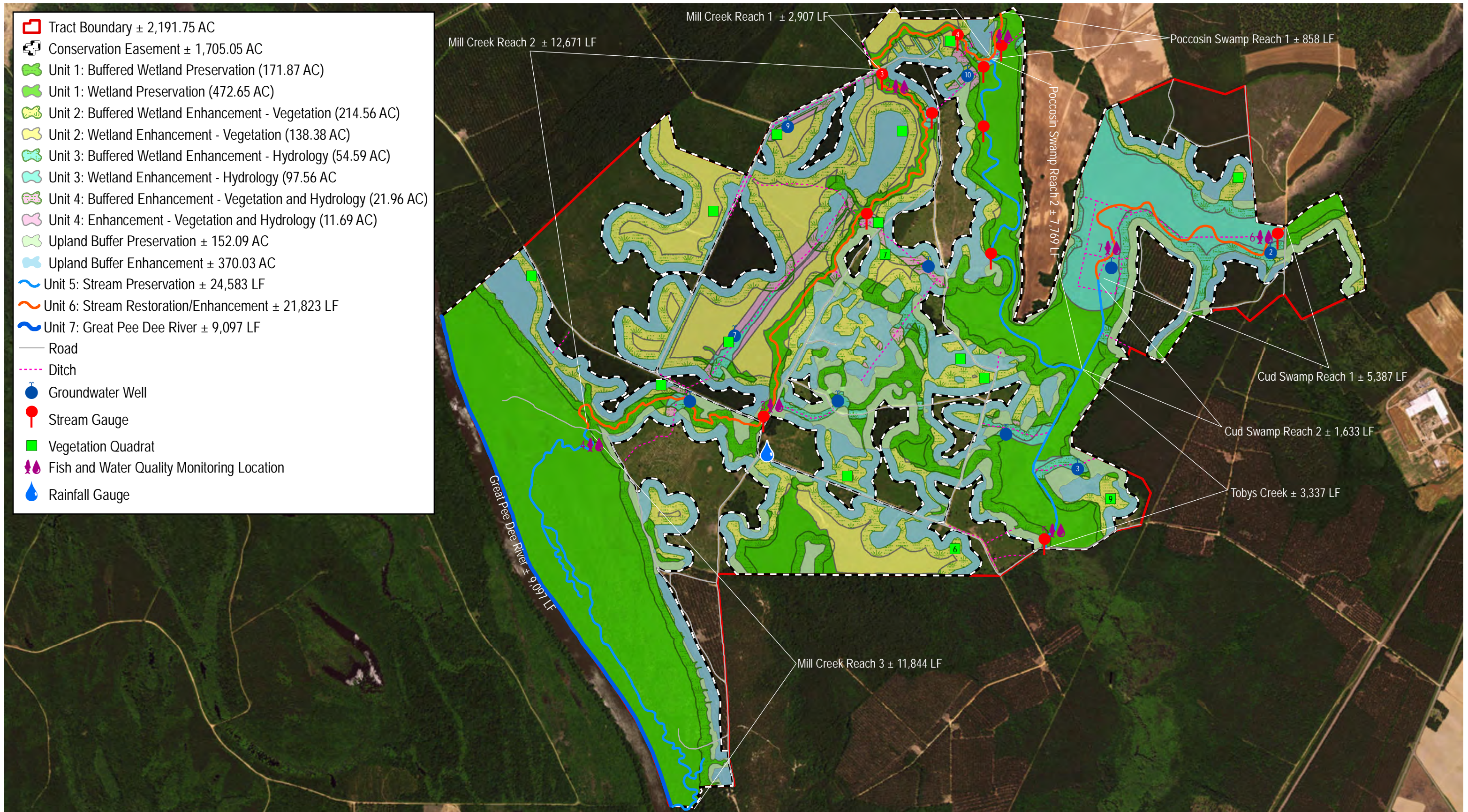
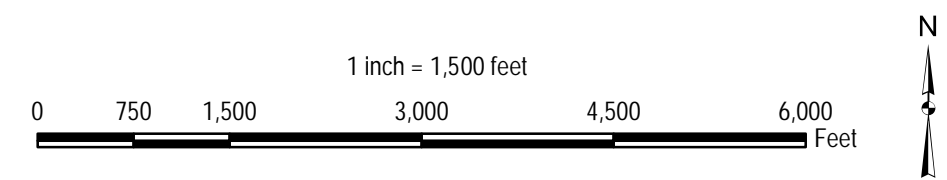
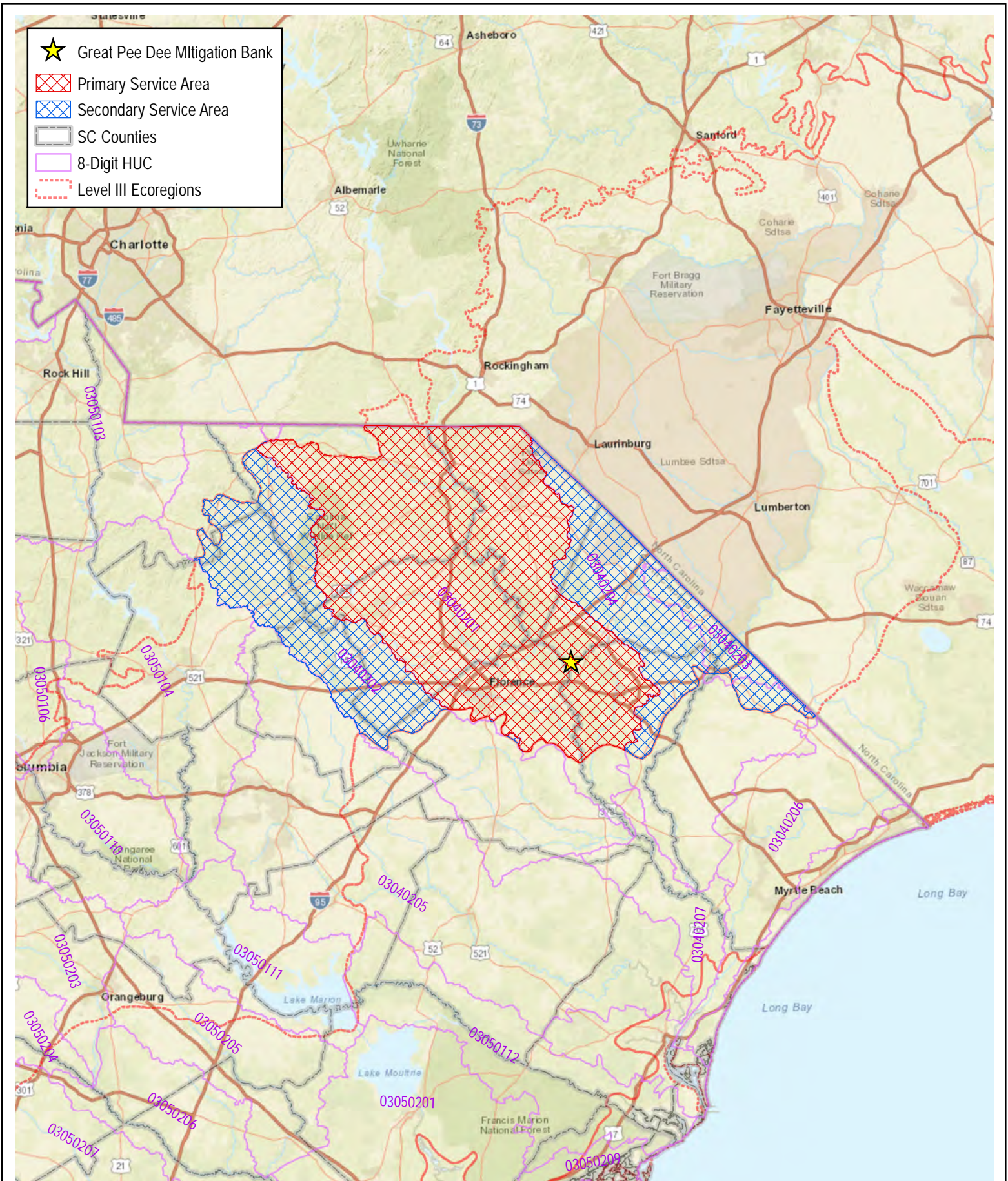


Figure 17: Baseline Data Collection Map
 Great Pee Dee Mitigation Bank
 Mitigation Prospectus
 Dillon and Marion Counties, South Carolina
 Source: ESRI World Imagery
 Date: September 2017





952 Houston Northcutt Blvd., Suite 100
 Mount Pleasant, SC 29464
 Ph: (843) 556-2624 Fx: (843) 556-4329
 www.JMT.com

Figure 18: Service Area Map
 Great Pee Dee Mitigation Bank
 Mitigation Prospectus
 Dillon and Marion Counties, South Carolina
 Source: EPA, USGS, ESRI
 Date: September 2017

